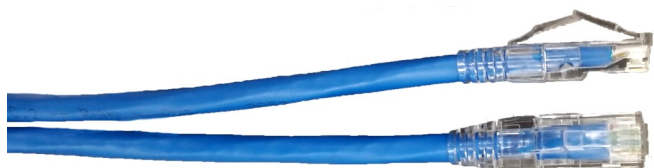


## Category 5e Patch Cable

Covered by Ventev's one-year TerraNet warranty program. For questions or to purchase product, contact Ventev: 800-851-4965 or sales @ventev.com.



LENGTH	SKU	VENTEV PN
1ft	272603	VEN-C5ePCH1FTBLUE
3ft	239973	VEN-C5ePCH3FTBLUE
5ft	255032	VEN-C5EPCH5FTBLUE
7ft	259172	VEN-C5ePCH7FTBLUE
15ft	200012	VEN-C5ePCH15FTBLUE
25ft	238204	VEN-C5EPCH25FTBLUE

PHYSICAL CHARACTERISTICS	
Conductor:	24 AWG 7/34 Stranded Tinned Copper
Insulation Material:	High Density Polyolefin, 0.007" Nom Wall Thickness
Outer Jacket Material:	Polyvinylchloride, 0.021" Nom Wall Thickness
Overall Diameter	0.215"

MECHANICAL CHARACTERISTICS	
Plug/Jack Termination:	RJ45 Specially For Stranded Conductors
Storage temp range:	-20°C to +60°C and +75°C
Operating temp range:	-20°C to +60°C and +75°C
Max pull tension:	25N
Min bend radius:	1.0" Static

SUITABILITY / ENVIRONMENT	
Indoor:	Yes

APPLICABLE SPECIFICATIONS AND AGENCY COMPLIANCE	
RoHS:	Yes
Telecommunications Standards:	(UL) Type CMR, CSA Type CMG, ETL Verified Cat5e TIA-568-C.2

PERFORMANCE TABLE	
Insertion Loss at various frequencies:	
$1 \leq f \leq 100 \text{ MHz}$ $1.2[1.967\sqrt{f} + 0.023(f) + 0.050/\sqrt{f}] \text{ dB MAX}$	
Return Loss at various frequencies:	
$1 \leq f \leq 10 \text{ MHz}$ $20 + 5 \text{ LOG}(f) \text{ dB MIN}$	
$10 \leq f \leq 20 \text{ MHz}$ $25 \text{ dB MIN}$	
$20 \leq f \leq 100 \text{ MHz}$ $25 - 8.6 \text{ LOG}(f/20) \text{ dB MIN}$	